

Job Name: _____ Location: _____ Date: _____

Purchaser: _____ Engineer: _____

Submitted to: _____ For Reference Approval Construction

Unit Designation:
Schedule No.:
GENERAL FEATURES

- Innovative flash technology enables high heating capacity at lower outside temperatures
- Exhibits 100% of rated heating capacity at 5°F; 90% of rated heating capacity at -4°F
- Built-in drain lift mechanism for condensate removal; lifts up to 33-7/16 in.
- Wide air flow pattern for better air distribution; independently adjustable vanes
- Auto wave airflow in heating mode—unit independently cycles through horizontal and vertical positions for a more even heat distribution
- Self-check function—integrated diagnostics
- Hard-wired, wall-mounted, remote controller (PAR-21MAA)
- Limited warranty: five years on parts and defects and seven years on compressors

OPTIONAL ACCESSORIES
Indoor Unit

- Multi-function Casement (PAC-SH53TM-E)
- Air Outlet Shutter Plates (PAC-SH51SP-E)
- Wireless Signal Receiver (PAR-SA9FA-E)
- i-see Sensor Corner Panel (PAC-SA1ME-E)
- High-efficiency (MERV 10) Filter (PAC-SH59KF-E)

Outdoor Unit

- M-NET Adapter (PAC-SF80MA-E)
- Air Outlet Guide (PAC-SG59SG-E; two pieces are required)
- Wind Baffle (WB-PA2; two pieces are required)

Cooling*

Rated Capacity 30,000 Btu/h
 Minimum Capacity 18,000 Btu/h
 SEER 15.6 Btu/h/W
 Total Input 2,450 W

Heating at 47°F*

Rated Capacity 32,000 Btu/h
 Minimum Capacity 18,000 Btu/h
 HSPF (IV) 9.4 Btu/h/W
 Total Input 3,440 W

Heating at 17°F*

Rated Capacity 19,000 Btu/h
 Rated Total Input 2,710 W
 Maximum Capacity 32,000 Btu/h
 Maximum Total Input 5,720 W

* Rating Conditions (Cooling) - Indoor: 80°F (27°C) DB / 67°F (19°C) WB. Outdoor: 95°F (35°C) DB / 75°F (24°C) WB.
 (Heating) - Indoor: 70°F (21°C) DB / 60°F (16°C) WB. Outdoor: 47°F (8°C) DB / 43°F (6°C) WB.
 (Heating) - Indoor: 70°F (21°C) DB / 60°F (16°C) WB. Outdoor: 17°F (-8°C) DB / 15°F (-9°C) WB.

Heating at 5°F

Maximum Capacity 32,000 Btu/h
 Maximum Input 6,630 W

Electrical Requirements

Power Supply 208 / 230V, 1-Phase, 60 Hz
 Breaker Size 30 A

Voltage

Indoor - Outdoor S1-S2 AC 208 / 230V
 Indoor - Outdoor S2-S3 DC 24V
 Indoor - Remote Controller DC 12V

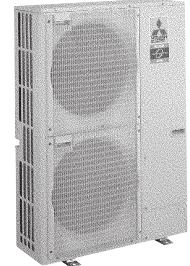
OPERATING RANGE

		Indoor Intake Air Temp.	Outdoor Intake Air Temp.
Cooling	Maximum	90°F (32°C) DB, 73°F (23°C) WB	115°F (46°C) DB
	Minimum	66°F (19°C) DB, 59°F (15°C) WB	0°F** (-18°C) DB
Heating	Maximum	83°F (28°C) DB	70°F (21°C) DB, 59°F (15°C) WB
	Minimum	63°F (17°C) DB	-13°F (-25°C) DB, -13°F (-25°C) WB

** With optional wind baffle accessory installed. If not installed, the minimum temperature will be 23°F (-5°C) DB.



Indoor Unit: PLA-A30BA


 Remote Controller:
PAR-21MAA


Outdoor Unit: PUZ-HA30NHA2

Indoor Unit

MCA 1 A
 Fan Motor 0.51 F.L.A.
 Fan Motor Output 50 W
 Airflow (Lo - M1 - M2 - Hi) 490 - 570 - 640 - 740 Dry CFM
 460 - 530 - 600 - 710 Wet CFM
 Sound Pressure Level (Lo - M1 - M2 - Hi) . . 28 - 30 - 32 - 34 dB(A)

DIMENSIONS	UNIT INCHES / MM	PANEL INCHES / MM
W	33-1/16 / 840	37-3/8 / 950
D	33-1/16 / 840	37-3/8 / 950
H	10-3/16 / 258	1-3/8 / 35

Weight (Unit/Grille)

lbs. 51 / 13
 kg 23 / 6
 External Finish Munsell No. 6.4 8.9 / 0.4
 Field Drainpipe Size O.D. 1-1/4" / 32 mm
 Wall-mounted Remote Controller PAR-21MAA
 (See Data Submittal Sheet)

Outdoor Unit

Compressor DC Inverter-driven Scroll
 MCA 28
 Fan Motor 0.4 + 0.4 F.L.A.
 Sound Pressure Level
 Cooling 52 dB(A)
 Heating 53 dB(A)

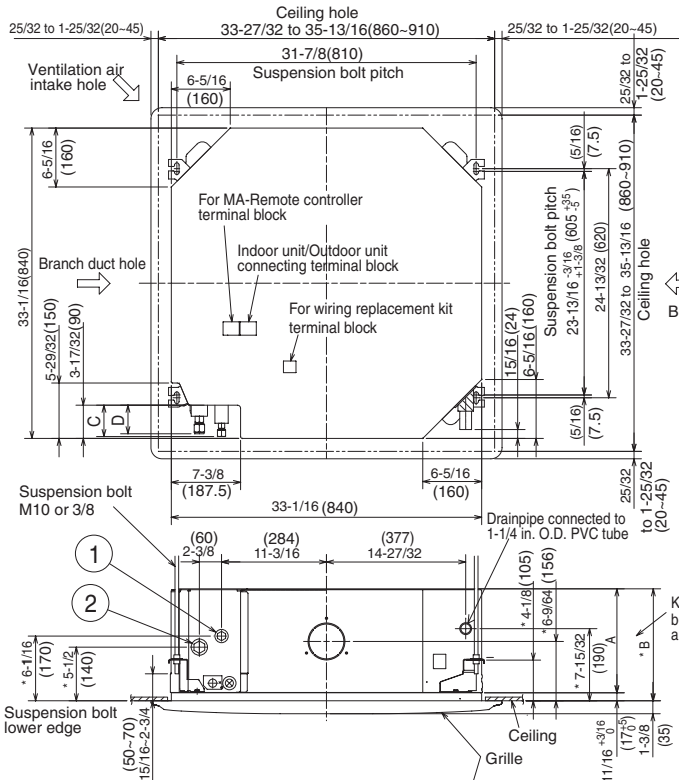
DIMENSIONS	INCHES / MM
W	37-3/8 / 950
D	13 + 1-3/16 / 330 + 30
H	53-1/8 / 1,350

Weight 265 lbs. / 120 kg
 External Finish Munsell No. 3Y 7.8 / 1.1
 Refrigerant Type R410A
 Refrigerant Pipe Size O.D.
 Gas Side 5/8" / 15.88 mm
 Liquid Side 3/8" / 9.52 mm
 Max. Refrigerant Pipe Length 245' / 75 m
 Max. Refrigerant Pipe Height Difference . . 100' / 30 m
 Connection Method Flared

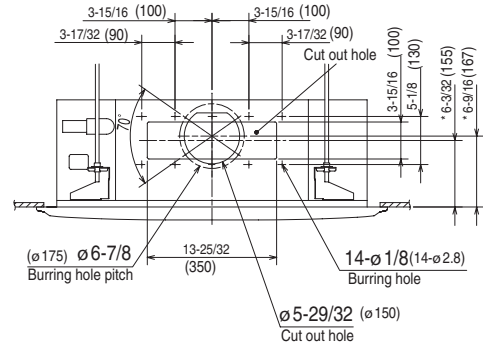


DIMENSIONS: PLA-A30BA

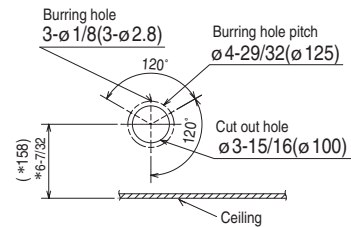
Unit : inch(mm)



Detail connecting of branch duct (nominal 6" round or nominal 4 x 14" rectangular)



Detail drawing of ventilation air intake connection

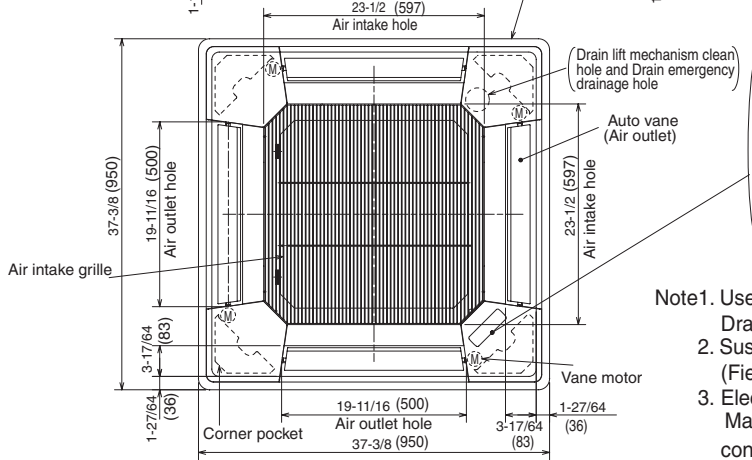
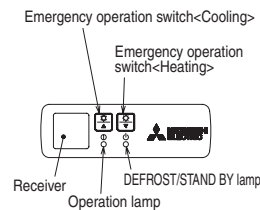


(Connected the attached flexible pipe or socket.)

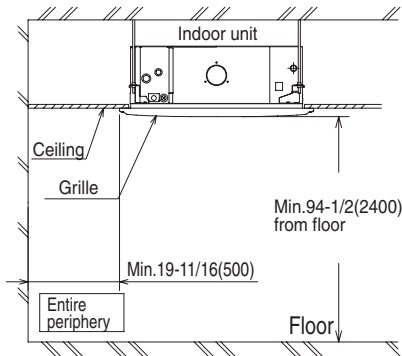
Keep 25/64(10) to 19/32(15) between unit ceiling and ceiling slab.

In case of standard grille

In case of wireless remote controller



- Note1.** Use 1-1/4 in. O.D. (32) PVC TUBE.
 Drain lift mechanism is included.
 2. Suspension bolt, use M10 or W3/8. (Field supplied)
 3. Electrical box may be removed for service purposes. Make sure to include a little slack in the electrical wire for control/power wires connections.
 4. The clearance between the grille and the unit is adjustable to compensate for ceiling height.
 5. For the installation of the optional high efficiency filter, the optional multi-functional casement is required.
 1) Add 5-5/16 (135mm) to the dimensions marked with an * in the figures 2) The high efficiency filter requires the multi-functional casement.
 6. When installing the branch ducts, be sure to insulate adequately. Otherwise condensation may occur.
 7. As for necessary installation/service space, please refer to the bottom left figure.



Models	①	②	A	B	C	D
PLA-A12BA PLA-A18BA	Refrigerant pipe ...ø 6.35mm Flared connection ...1/4	Refrigerant pipe ...ø 12.7mm Flared connection ...1/2	9-1/2 (241)	10-3/16 (258)	3-5/32 (80)	2-29/32 (74)
PLA-A24BA PLA-A30BA PLA-A36BA PLA-A42BA	Refrigerant pipe ...ø 9.52mm Flared connection ...3/8	Refrigerant pipe ...ø 15.88mm Flared connection ...5/8	11-1/16 (281)	11-3/4 (298)	3-11/32 (85)	3-1/32 (77)

